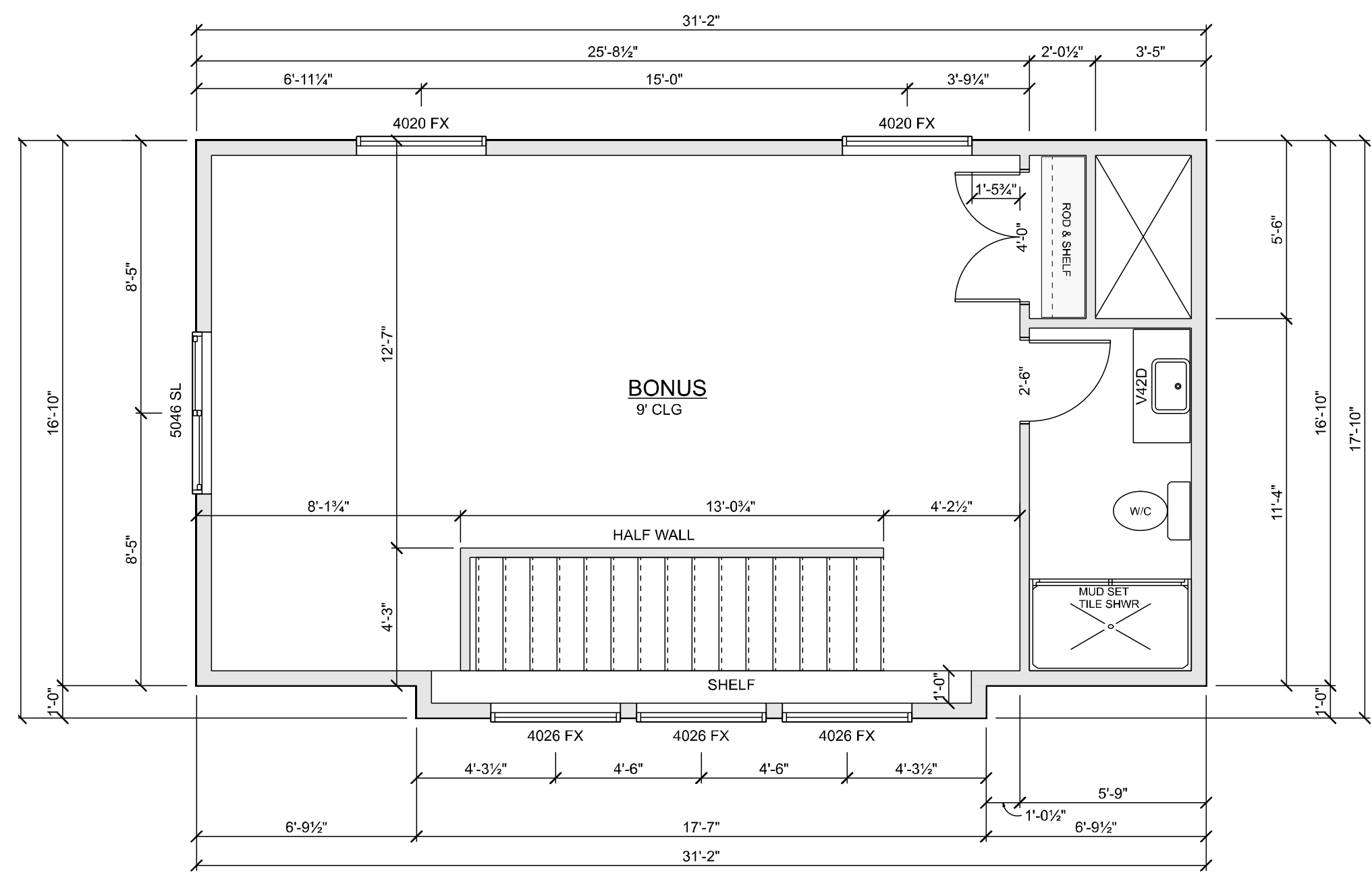


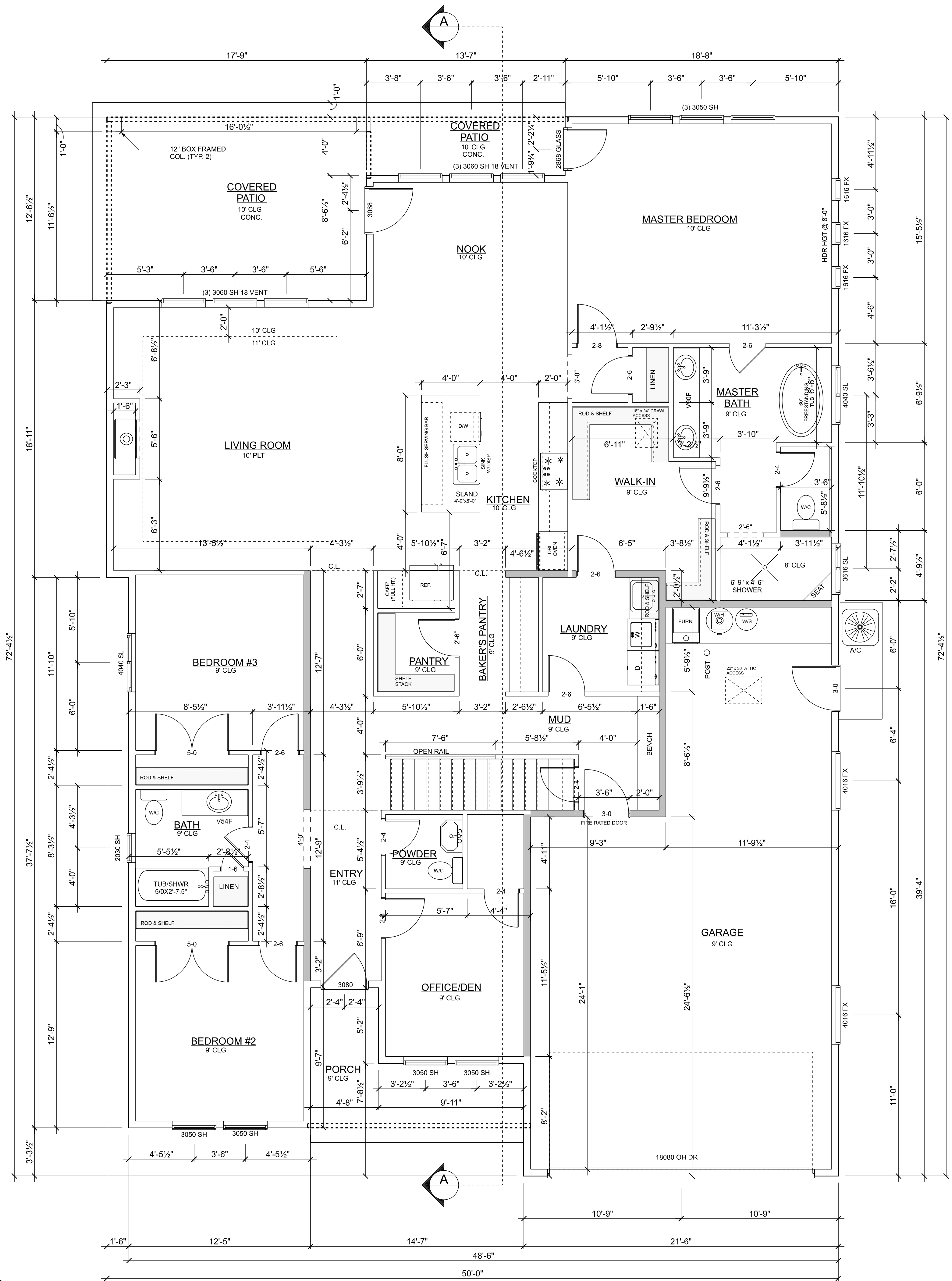
**HEADER NOTE:**

1. ALL LOAD BEARING HEADERS TO BE 4x8 / (2) 2x8 MIN. U.N.O.
2. ALL MAIN FLOOR EXTERIOR WINDOW HEADER HEIGHTS SHOWN AT 7'-6" A.F.F U.N.O.
3. ALL MAIN FLOOR INTERIOR HEADER HEIGHTS TO BE FRAMED AT 6'-8" A.F.F. (TO BOTTOM OF HEADER) U.N.O.
4. ALL UPPER FLOOR EXTERIOR HEADER HEIGHTS TO BE FRAMED AT 8'-0" A.F.F. (TO BOTTOM OF HEADER) U.N.O.
5. ALL UPPER FLOOR INTERIOR HEADER HEIGHTS TO BE FRAMED AT 6'-8" A.F.F. (TO BOTTOM OF HEADER) U.N.O.



**FLOOR PLAN - BONUS**

SCALE : 1/4" = 1'-0" (FULL SIZE PLANS)



**FLOOR PLAN - MAIN**

SCALE : 1/4" = 1'-0" (FULL SIZE PLANS)

**PLATE HT**  
9'-1 1/8" 1ST FLR  
9'-1 1/8" BASEMENT  
UNLESS OTHERWISE NOTED

**FLOOR AREA**  
SCALE 1/4" = 1"  
2414 SQ. FT. 1ST FLR  
453 SQ. FT. 2ND FLR  
**2867 SF TOTAL**  
695 SF GARAGE  
277 SF PATIO  
83 SF PORCH

MEMBER  
**A | BD**  
AMERICAN INSTITUTE OF  
BUILDING DESIGNERS

**DRAFTTECH**  
Turning Dreams into Plans  
1334 E STATE STREET - EAGLE, ID 83616  
(208) 887-1751

Drafttech, LLC  
retains all rights and ownership  
of design, plans and specifications

**BALT, LLC.**

**LOT 6 BLOCK 1  
PATAGONIA EAST**

PLAN CONFORMS  
TO CURRENT  
PRESCRIPTIVE CODE

PRELIMINARY DRAWINGS  
REV 1 09-23-24

CONTRACTOR TO REVIEW DRAWINGS  
PRIOR TO BIDDING AND CONSTRUCTION.  
ANY ERRORS AND OMISSIONS SHALL BE  
BROUGHT TO THE ATTENTION OF THE  
DRAFTER/DESIGNER FOR CORRECTION.

FINAL DRAWINGS  
REV A 10-02-24  
REV B 10-18-24

CURRENT REVISION: **B**

DESIGNER: SM770P  
DRAFTSMAN: J. MAJAN  
CHECKED BY: ---

DRAWING:  
**FLOOR PLAN**

**3**