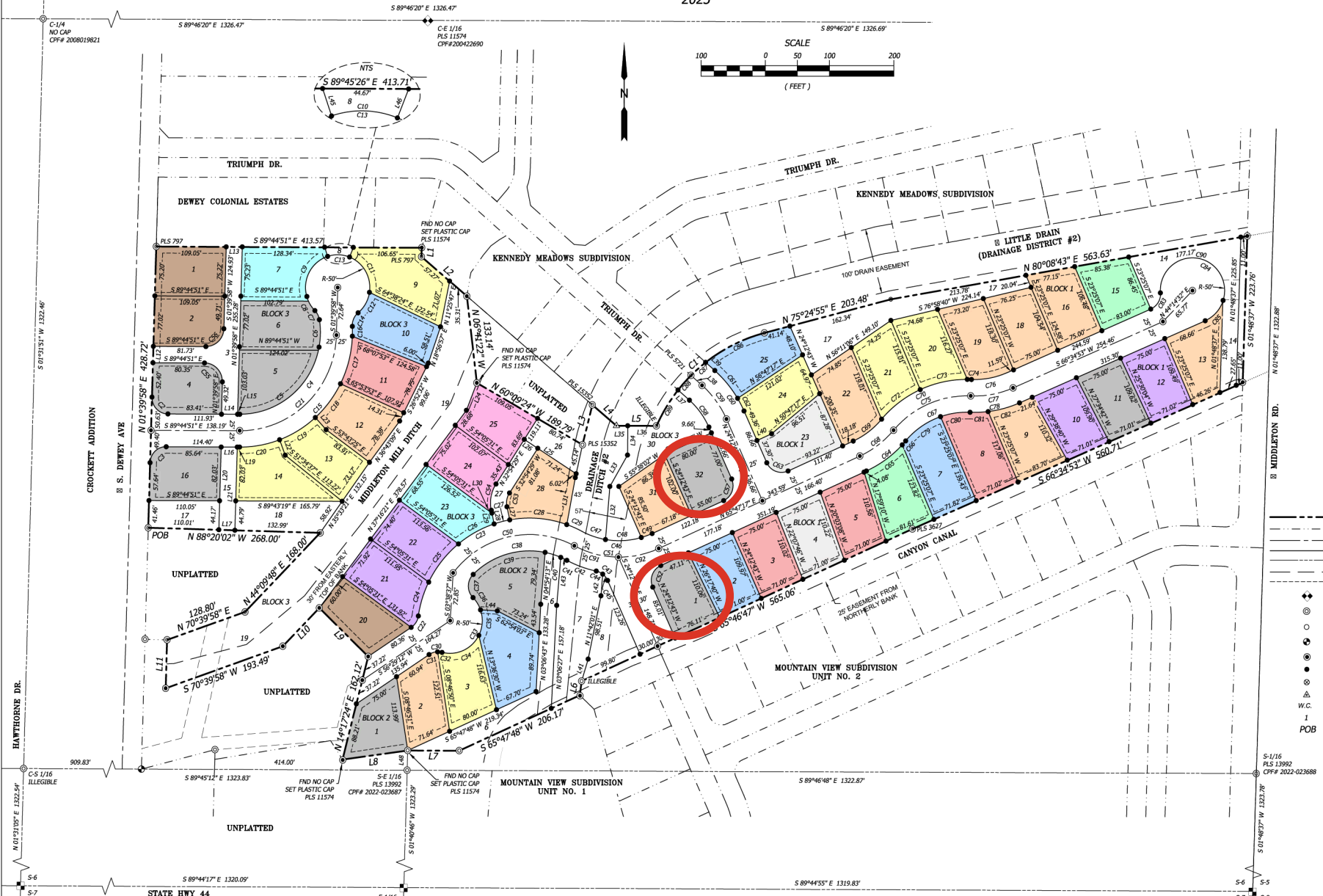
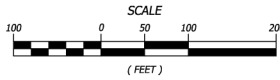


PLAT SHOWING
THE MILL AT MIDDLETON
 LOCATED IN THE N1/2 OF THE SE1/4 OF SECTION 6, T. 4 N., R. 2 W., B.M.,
 CITY OF MIDDLETON, CANYON COUNTY, IDAHO
 2023



- LEGEND**
- SUBDIVISION BOUNDARY LINE
 - - - EXISTING DEED OR LOT LINE
 - CENTERLINE
 - - - SECTIONAL LINE
 - - - IRRIGATION EASEMENT
 - SET ALUMINUM CAP
 - ⊕ FOUND 5/8" REBAR/CAP PLS 13992 OR AS NOTED
 - ⊙ FOUND 1/2" REBAR AS NOTED
 - ⊙ FOUND BRASS CAP
 - ⊙ SET 5/8" REBAR/CAP PLS 11574
 - ⊙ SET 1/2" REBAR/CAP PLS 11574
 - ⊙ SET 1/2" REBAR/CAP ESMT. PLS 11574
 - ⊙ CALCULATED POINT
 - W.C. WITNESS CORNER
 - 1 LOT NUMBER
 - POB POINT OF BEGINNING

SEE SHEET 2 OF 4 FOR LINE/CURVE TABLES,
 NOTES, NARRATIVE AND REFERENCES.



2030 S. WASHINGTON AVE.
 EMMETT, ID 83617
 (208) 398-8104
 FAX (208) 398-8105

WWW.SAWTOOTHLS.COM

DATE	REVISIONS

SHEET:	DATE:	DRAWN BY:	CHECKED BY:	JOB#:	DWG#:
1 OF 4	4/2023	AR	JB	121177	121177-FP