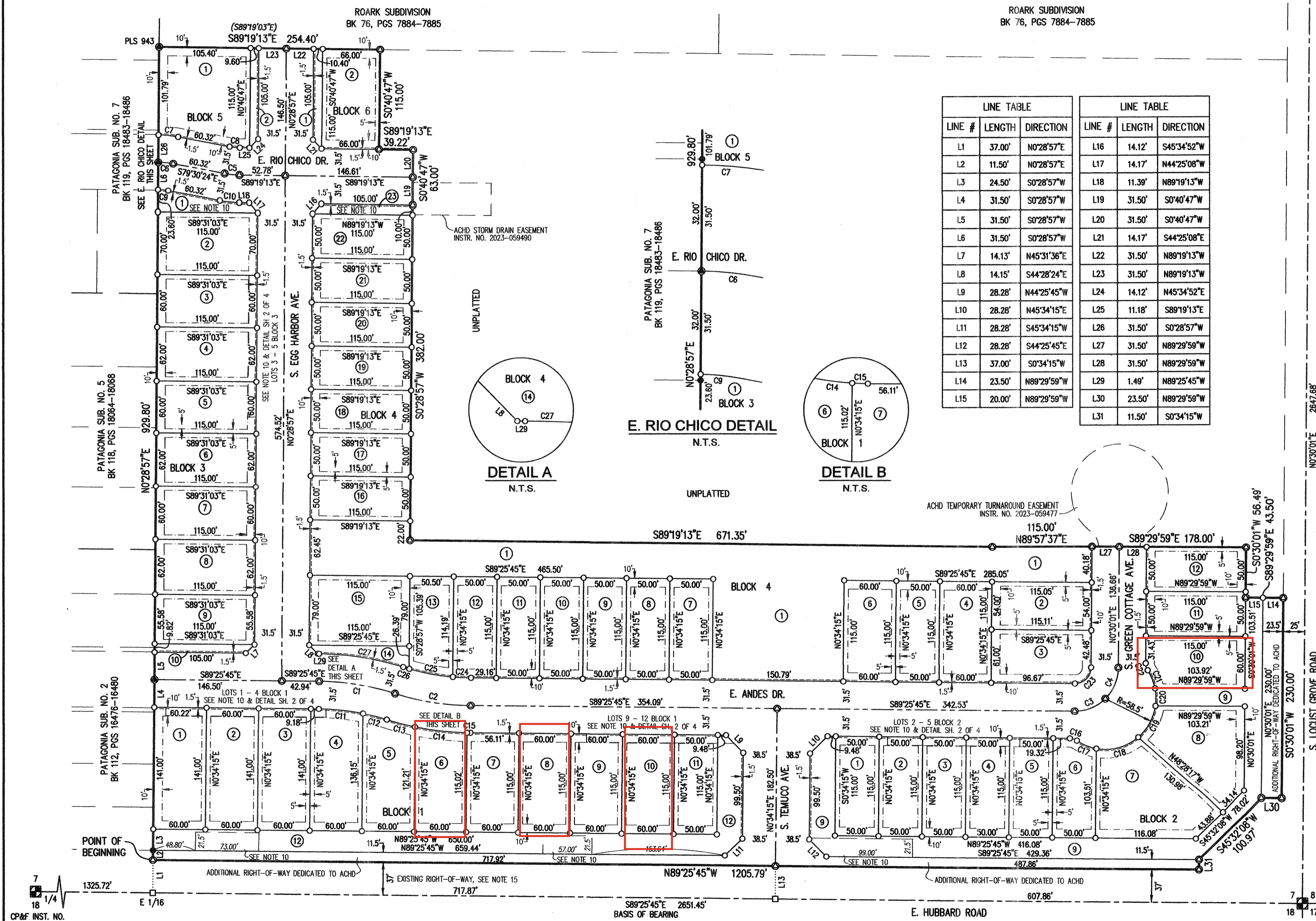


# PATAGONIA EAST SUBDIVISION NO. 1

LOCATED IN THE SE 1/4 OF THE SE 1/4 SECTION 7, TOWNSHIP 2 NORTH, RANGE 1 EAST, B.M., CITY OF KUNA, ADA COUNTY, IDAHO  
2024

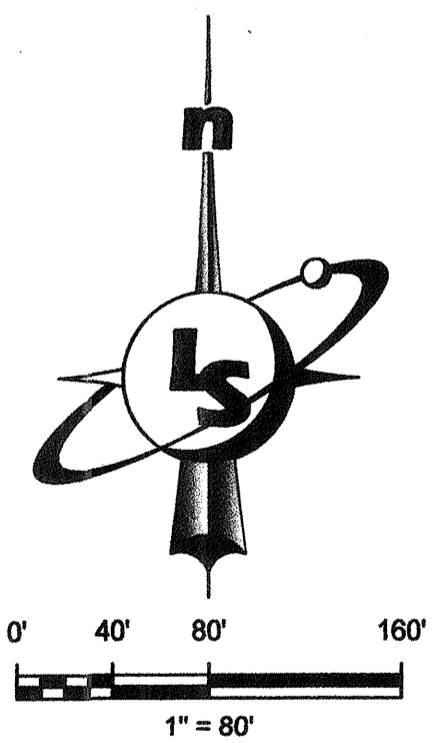
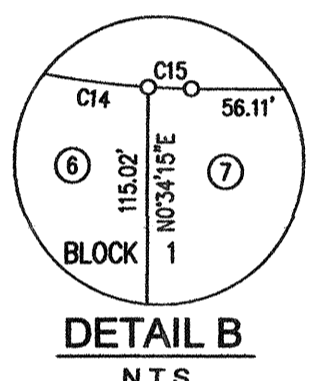
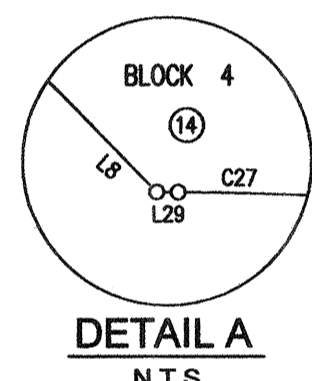
CP&F INST. NO. 2014-074308

1/4  
7 8



LINE TABLE			LINE TABLE		
LINE #	LENGTH	DIRECTION	LINE #	LENGTH	DIRECTION
L1	37.00'	N0°28'57"E	L16	14.12'	S45°34'52"W
L2	11.50'	N0°28'57"E	L17	14.17'	N44°25'08"W
L3	24.50'	S0°28'57"W	L18	11.39'	N89°19'13"W
L4	31.50'	S0°28'57"W	L19	31.50'	S0°40'47"W
L5	31.50'	S0°28'57"W	L20	31.50'	S0°40'47"W
L6	31.50'	S0°28'57"W	L21	14.17'	S44°25'08"E
L7	14.13'	N45°31'36"E	L22	31.50'	N89°19'13"W
L8	14.15'	S44°28'24"E	L23	31.50'	N89°19'13"W
L9	28.28'	N44°25'45"W	L24	14.12'	N45°34'52"E
L10	28.28'	N45°34'15"E	L25	11.18'	S89°19'13"E
L11	28.28'	S45°34'15"W	L26	31.50'	S0°28'57"W
L12	28.28'	S44°25'45"E	L27	31.50'	N89°29'59"W
L13	37.00'	S0°34'15"W	L28	31.50'	N89°29'59"W
L14	23.50'	N89°29'59"W	L29	1.49'	N89°25'45"W
L15	20.00'	N89°29'59"W	L30	23.50'	N89°29'59"W
			L31	11.50'	S0°34'15"W

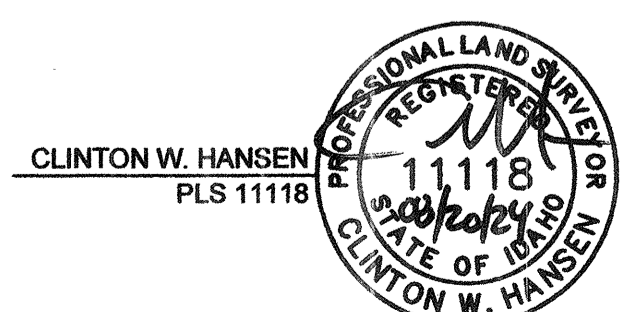
- ### LEGEND
- FOUND ALUMINUM CAP MONUMENT
  - FOUND 1/2" REBAR WITH PLS 11118 PLASTIC CAP, OR AS NOTED
  - FOUND 5/8" REBAR WITH PLS 11118 PLASTIC CAP, OR AS NOTED
  - SET 1/2" REBAR WITH PLS 11118 PLASTIC CAP
  - SET 5/8" REBAR WITH PLS 11118 PLASTIC CAP
  - CALCULATED POINT
  - SECTION LINE
  - CENTER LINE
  - ACHD STORM WATER DRAINAGE EASEMENT LINE SEE NOTE 10
  - ACHD PERMANENT SIDEWALK EASEMENT LINE, INSTRUMENT NO. 2024-030605
  - PUBLIC UTILITY, PRESSURE IRRIGATION & LOT DRAINAGE EASEMENT LINE - SEE NOTES 1, 2 & 3
  - OTHER EASEMENT LINE AS NOTED
  - SURVEY TIE LINE
  - SUBDIVISION BOUNDARY LINE
  - LOT LINE
  - ADJACENT PROPERTY LINE
  - LOT NUMBER
  - (xxx) RECORD INFORMATION



### SURVEY NARRATIVE

THE BOUNDARY FOR THIS SUBDIVISION WAS DEVELOPED FROM SURVEYED TIES TO CONTROLLING SECTION CORNER MONUMENTATION, THE PLATTED SUBDIVISION BOUNDARY OF PATAGONIA SUBDIVISION NO. 2, PATAGONIA SUBDIVISION NO. 5, PATAGONIA SUBDIVISION NO. 7, ROARK SUBDIVISION, INFORMATION FROM RECORD OF SURVEY NUMBERS 3897, 3946, 5995, 7589, 9940 AND CURRENT DEEDS OF RECORD. THE SURVEYED MONUMENTATION AND CONTROLLING BOUNDARIES FIT THE RECORDS WELL AND WERE ACCEPTED TO ESTABLISH THE BOUNDARY FOR THIS SUBDIVISION SHOWN HEREON.

SEE SHEET 2 OF 4 FOR NOTES, CURVE DATA & ADDITIONAL DETAILS



231 E. 5TH ST., STE. A  
MERIDIAN, ID 83642  
(208) 288-2040 fax (208) 288-2557  
www.landsolutions.biz